



www.sunnysyrup.com



飲 的文化

Bubble Tea Culture



玖旺食品有限公司
SUNNYSYRUP FOOD CO., LTD.

地址：248 新北市新北產業園區五工六路 51 號 1 樓
1F., No. 51, Wugong 6th Rd., Wugu Dist., New Taipei City 248021, Taiwan (R.O.C.)
TEL：+886-2-2298-3149 / FAX：+886-2-2298-1638
Email：services@sunnysyrup.com



SunnySyrup

版權所有 · 翻印必究 Copyright © 2019 SunnySyrup. All Rights Reserved.

SunnySyrup Company Profile & Product Catalog



目錄 | Table of Contents

企業概述與服務 | Corporate Profile & Services

公司簡介 Company Profile.....	03-04
生產作業流程 Production Process.....	05-06
內銷及外銷團隊 Domestic & International Sales Teams.....	07
國際食品安全管理驗證 International Food Safety Certifications.....	08
世界行銷據點 Global Market Footprint	09
海外食品展覽 International Food Exhibitions	10
創業輔導服務 Business Consulting Services.....	11
教學培訓課程 Training Programs.....	12

核心產品系列 | Core Product Series

魔豆系列 Popping Boba Series	13-16
魔豆小包裝規格 Popping Boba - Mini Pack Specifications.....	17-18
粉圓系列 Tapioca Pearl Series	19-20
冷凍微波珍珠 Frozen Microwavable Boba	21
常溫即食珍珠 Ambient Ready-to-Eat Boba	22
茶葉及萃取茶 Tea Leaves & Tea Extracts	23-26
濃糖果漿系列 Concentrated Juice Series.....	27-32
花釀系列 Flower Petal Syrup Series.....	33-34
果醬系列 Fruit Jam Series.....	35-36
風味糖漿系列 Flavored Syrup Series	37
椰果系列 Coconut Jelly Series	38
晶球系列 Agar Jelly Ball Series	39
果凍系列 & 果凍爆爆珠 Jelly Series & Jelly Popping Boba	40
調味飲料粉系列 Flavored Beverage Powder Series.....	41-44
蜜漬罐頭系列 Preserved Canned Toppings.....	45-46
雪花冰系列 Snow Ice Series.....	47-48

配套物料與設備 | Packaging & Equipment

包裝材料 Packaging Materials.....	49-51
機器設備 Machinery & Equipment.....	52-54
魔豆形象圖 Popping Boba Concept Image.....	55



公司簡介 Company Profile

台灣，珍珠奶茶文化的發源地。隨著手搖飲風潮席捲全球，玖旺食品不僅深耕濃糖果漿生產技術，更垂直整合產業鏈，提供全方位的飲品原物料解決方案。

在台灣，無數熱銷飲品的背後，都有我們默默耕耘的身影。我們秉持「教學相長、與客共榮」的精神，致力於推廣珍珠奶茶的調製工藝。除了穩健經營本土市場，我們更積極拓展海外版圖，具備完善的進出口報關、海關檢疫及國際食品認證經驗（如 ISO、HACCP），為全球客戶提供高品質、符合食安標準的客製化產品。您的成功，就是我們最大的榮耀。

Taiwan is the birthplace of bubble tea culture. At SunnySyrup, we specialize in premium fruit syrup production and integrated supply chain solutions for the beverage industry.

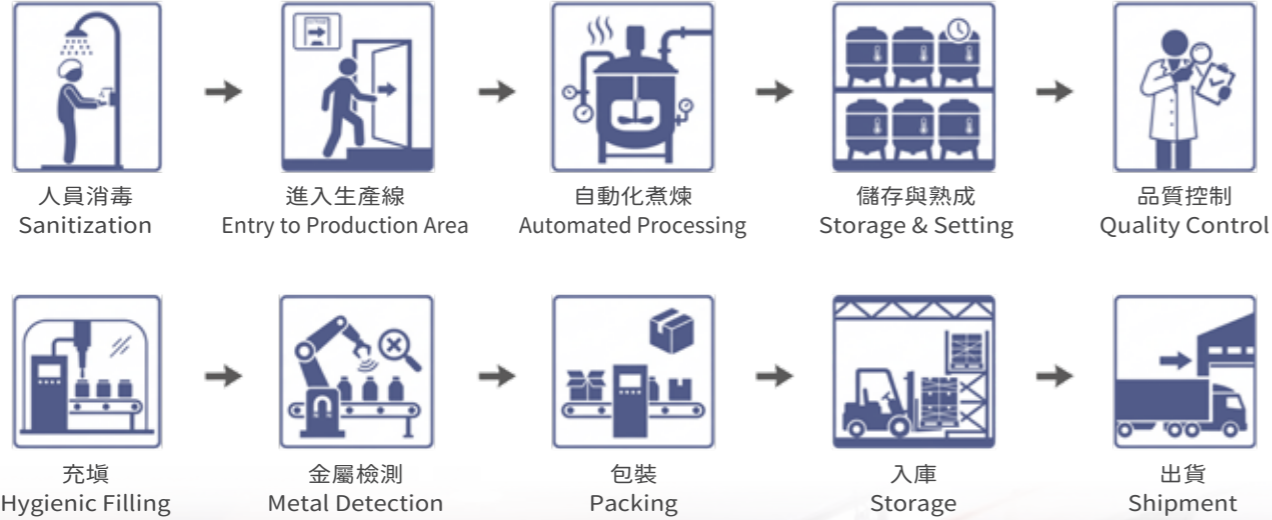
Our expertise goes beyond manufacturing; we are dedicated to beverage innovation and formulation, helping our clients create signature drinks that stand out. With decades of experience in both domestic and international markets, we offer seamless support for global expansion—from logistics and customs clearance to international food safety certifications like ISO and HACCP.

We pride ourselves on being a flexible, high-end manufacturer capable of delivering customized products to meet diverse market demands. At SunnySyrup, your success is our greatest achievement.



作業流程

Production Workflow



專業生產線：承接 OEM / ODM 代工服務

Professional Production Lines | Expert OEM & ODM Services



除塵室 Cleanroom Facility



儲存設備 Storage Tanks



工廠內部 Manufacturing Facility



實驗室 Quality Control Lab



填充室 Packaging Area

專業服務團隊：深耕本土，連結全球

Our Expert Teams: From Local Roots to Global Markets

國內業務部 & 國際外銷部

Domestic Sales & Global Export Team



國際食品安全管理驗證

World-Class Food Safety Certifications

Global Safety Credentials: We adhere to the highest international standards, including **FSSC 22000**, **ISO 22000**, **HACCP**, **Halal**, and **Free Sales Certification**, ensuring safety, quality, and consistency in every drop.



FSSC 22000



ISO 22000 : 2018



HACCP



CERTIFICATE OF FREE SALES AND MANUFACTURE



Halal Certificate



D-U-N-S® Certified



創業輔導服務 Business Guidance

一站式創業輔導：從產品研發到開店支援 Turnkey Solutions: From Product R&D to Shop Launch

從研發到營運，我們為您打造一站式創業方案，讓經營變得簡單。
From R&D to operations, our turnkey solutions simplify your business journey.



教學培訓課程 Training Program

手搖飲與雪花冰專業培訓課程 Professional Bubble Tea & Snow Ice Training Course



課程特色與服務項目 | Program Features & Services

- ✓ 實務操作及培訓 Hands-on Technical Training
- ✓ 工廠導覽與解說 Factory Tour & Product Insights
- ✓ 研發與菜單設計 Recipe R&D & Menu Planning
- ✓ 創業與經營諮詢 Startup & Operational Consulting
- ✓ 成本與物流支援 Cost Analysis & Logistics Support
- ✓ 樣品與證書提供 Sample Materials & Certification

我們不只銷售原料；我們教您如何成功。

"We don't just sell ingredients; we teach you how to succeed."



飲品教學室 Bubble Tea Training Room

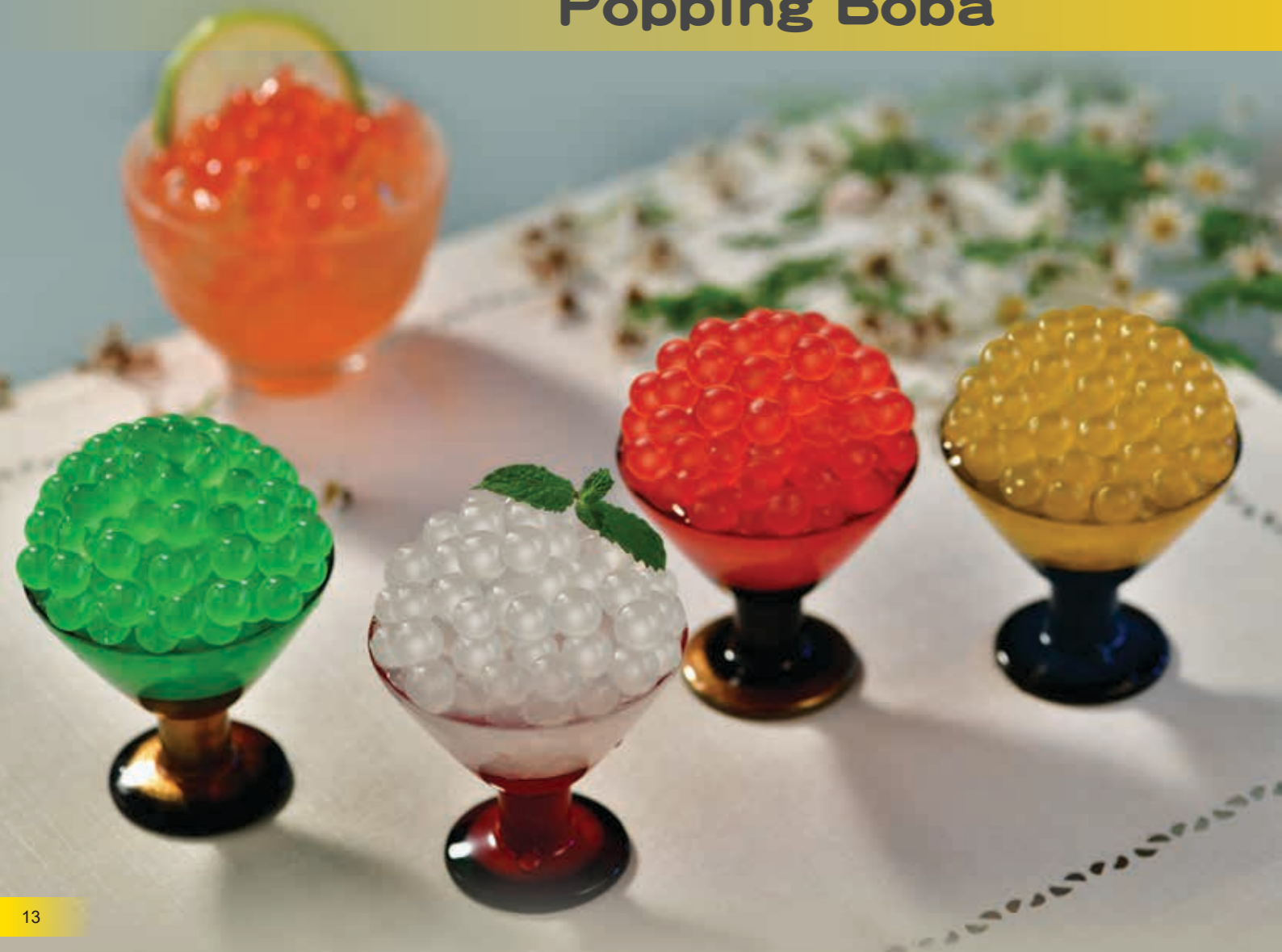


雪花冰教室 Snow Ice Training Room



魔豆系列

Popping Boba



草莓風味魔豆
Popping Boba-Strawberry Flavor



芒果風味魔豆
Popping Boba-Mango Flavor



藍莓風味魔豆
Popping Boba-Blueberry Flavor



荔枝風味魔豆
Popping Boba-Lychee Flavor



百香果風味魔豆
Popping Boba-Passion Fruit Flavor



青蘋果風味魔豆
Popping Boba-Green Apple Flavor



優格風味魔豆
Popping Boba-Yogurt Flavor



水蜜桃風味魔豆
Popping Boba-Peach Flavor



◀ 藍桔冰沙 + 魔豆
Blue Curacao Smoothie
with Popping Boba



檸檬氣泡飲 + 魔豆 ▶
Lemon Sparkling Drink
with Popping Boba



奶酪 + 魔豆 ▶
Panna Cotta with
Popping Boba



柳橙風味魔豆
Popping Boba-Orange Flavor



鳳梨風味魔豆
Popping Boba-Pineapple Flavor



櫻桃風味魔豆
Popping Boba-Cherry Flavor



紅石榴風味魔豆
Popping Boba-Grenadine Flavor



奇異果風味魔豆
Popping Boba-Kiwi Fruit Flavor



蜂蜜風味魔豆
Popping Boba-Honey Flavor



青檸檬風味魔豆
Popping Boba-Lime Flavor



綠哈密瓜風味魔豆
Popping Boba-Honeydew Flavor



蔓越莓風味魔豆
Popping Boba-Cranberry Flavor



西瓜風味魔豆
Popping Boba-Watermelon Flavor



泡泡糖風味魔豆
Popping Boba-Bubble Gum Flavor



薄荷風味魔豆
Popping Boba-Peppermint Flavor

產品規格 | Product Specifications

產品包裝 | Packaging

3.4 kg x 4 cans / 2.1 kg x 4 cans / 1.6 kg x 8 cans / 100 g x 80 cups

外箱尺寸 | Carton Dimensions

38 x 38 x 21 cm

棧板配置 | Pallet Capacity

每板 63 或 72 箱 (63 or 72 cartons per pallet)

最低訂購量 | MOQ

常規口味 (Regular Flavor) : 1 箱 (1 carton)
客製口味 (Custom Flavor) : 50 箱 (50 cartons)

客製化服務 | Customization

接受風味、顏色調整及商標外箱私版製作。
OEM/ODM available, including custom flavors, colors, and private labeling.



◀ 椰子冰沙 + 草莓 & 芒果魔豆
Coconut Smoothie with
Strawberry & Mango
Popping Boba



魔豆
Popping Boba 100g 小包裝



3.4 kg



2.1 kg



1.6 kg

魔豆罐 Popping boba can

產品規格 | Product Specifications

	包裝規格 Packaging	最低訂購量 MOQ	棧板配置 Pallet Capacity	外箱尺寸 Carton Dimensions
	W 8.7 x H 10.5 cm 50 g x 210 bags/CTN	144 CTN	72 CTN per pallet	36.2 x 36 x 20 cm
	W 8 x H 4.5 / H3.5 cm 100 g x 100 cups/CTN	144 CTN	72 CTN per pallet	36.6 x 36.6 x 20 cm
	W 8 x H 4.5 / H3.5 cm 130 g x 80 cups/CTN	162 CTN	81 CTN per pallet	36.6 x 36.6 x 20 cm
	W 8 x H 7.5 cm 225 g x 48 cups/CTN	252 CTN	63 CTN per pallet	33.8 x 33.6 x 22.7 cm
	W 12 x H 6.5 cm 490 g x 18 cups/CTN	216 CTN	108 CTN per pallet	36.5 x 36.5 x 14 cm
	W 12 x H 13 cm 2 lbs x 9 tubs/CTN	198 CTN	99 CTN per pallet	36.6 x 36.6 x 14 cm
	W 17.5 x H 6.5 cm 1.1 kg x 8 cans/CTN	90 CTN	90 CTN per pallet	36.6 x 36.6 x 14 cm



粉圓系列

Tapioca Pearls



珍珠粉圓 (黑)
Tapioca Pearls (Black)



珍珠粉圓 (白)
Tapioca Pearls (White)



珍珠粉圓 (黃金)
Tapioca Pearls (Golden)

產品規格 | Product Specifications

項目	內容規格	Specifications
產品包裝 Packaging	3 kg x 6 包 / 箱	3 kg x 6 bags / CTN
外箱尺寸 Carton Dimensions	36 x 39.5 x 23 cm	36 x 39.5 x 23 cm
粉圓代號 Tapioca Pearl Code	2.5 / 2.2 / 1.5	2.5 / 2.2 / 1.5
粉圓尺寸 Tapioca Pearl Size	直徑 : 1 / 0.8 / 0.5 cm	Diameter: 1 / 0.8 / 0.5 cm
常規黑色 MOQ Regular Black MOQ	1 箱	1 Carton
彩色系列 MOQ Colorful Series MOQ	每色 50 箱	50 Cartons / Color

Custom colors available upon request. (可根據需求提供客製顏色。)



珍珠系列：傳承經典，引領創新

Tapioca Pearl Series: Classic Taste, Modern Innovation

從傳統粉圓到即食珍珠，滿足各種營業需求。

From traditional pearls to instant solutions, we cater to every business need.

冷凍微波珍珠 | Frozen Microwave Tapioca Pearls

產品包裝 | Packaging Sizes 85 g / 90 g / 120 g / 600 g

包裝方式 | Quantity per Carton
85 g / 90 g: 96 bags / CTN
120 g: 96 bags / CTN
600 g: 20 bags / CTN

現有口味 | Available Flavors
黑糖、草莓、芒果、荔枝、葡萄、紅茶、焦糖、巧克力、抹茶、咖啡 (Brown Sugar, Strawberry, Mango, Lychee, Grape, Black Tea, Caramel, Chocolate, Matcha, Coffee)

運輸說明 | Shipping Note
限冷凍運輸。
(Frozen shipping only / Store at -18°C)



微波珍珠
Microwave Tapioca Pearl
(芒果 / 黑糖 / 荔枝 / 草莓)
(Mango/Brown Sugar/Lychee/ Strawberry)



黑糖微波珍珠 600g
Brown Sugar Flavor 600g



芒果微波珍珠
Mango Tapioca Pearl



草莓微波珍珠
Strawberry Tapioca Pearl

常溫即食珍珠 | Ambient Instant Tapioca Pearls

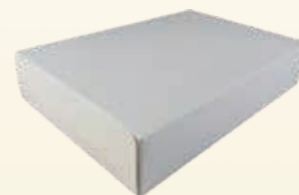
口味與包裝 | Flavor & Packaging 黑糖口味 50 g (Brown Sugar Flavor, 50 g)

裝箱規格 | Case Pack 50 包 / 盒，4 盒 / 箱 (50 packs / Box, 4 Boxes / CTN) 共 200 包 / 箱 (Total 200 packs / CTN)

最低訂購量 | MOQ 50 箱 (50 cartons)

外箱尺寸 | Carton Dimensions 57 x 40 x 17 cm

保存期限 | Shelf Life 常溫保存 2 年 (2 years at room temperature)



即食珍珠組合包盒裝
Bubble Tea DIY Kit



即食珍珠組合包內容物
Kit Contents



即食珍珠 50 包一盒
50 packs per Box



常溫即食珍珠 50g
Instant Tapioca Pearl 50g

即食珍珠使用方式 | Preparation Guide for Instant Tapioca Pearls

步驟 1：珍珠加熱 (二選一) | Step 1: Heat the Boba (Choose One)

選項 A：微波加熱 | Option A: Microwave

將珍珠袋剪開一小角並加入 5 cc 冷水，以 750W 微波加熱 30 秒 (50g 珍珠)。Cut a small corner off the boba pouch and add 5 cc of cold water. Microwave at 750W for 30 seconds (50g pack).

選項 B：滾水加熱 | Option B: Boiling Water

將 50g 珍珠袋直接放入滾水中，加熱約 2 分鐘。Place the 50g boba pack directly into boiling water and heat for about 2 minutes.

步驟 2：沖泡奶茶 | Step 2: Mix the Milk Tea

將一包奶茶粉與 150 cc 熱水倒入杯中，攪拌均勻至溶解。Mix one pack of milk tea powder with 150 cc of hot water in a cup and stir well until dissolved.

步驟 3：組合飲用 | Step 3: Combine and Enjoy

將加熱好的珍珠與奶茶倒入裝有冰塊的玻璃杯中，即可飲用！Pour the heated boba and milk tea into a glass filled with ice cubes, then enjoy!

鮮茶系列 Tea Leaves Series



泡沫紅茶
Bubble Black Tea



阿薩姆紅茶
Assam Black Tea



錫蘭紅茶
Ceylon Black Tea



伯爵紅茶
Earl Grey Black Tea



茉香綠茶
Jasmine Green Tea



烏龍茶
Oolong Tea



鐵觀音
Tieguanyin Tea



青茶
Green Tea



咖啡紅茶
Coffee Black Tea



玫瑰紅茶
Rose Black Tea





(萃) 招牌復刻紅茶
Signature Vintage Black
Tea (Extract)



(萃) 皇家經典紅茶
Royal Classic Black Tea
(Extract)



(萃) 阿薩姆紅茶
Assam Black Tea
(Extract)



(萃) 特級茉香綠茶
Premium Jasmine
Green Tea (Extract)



(萃) 黃金果茶
Golden Fruit Tea
(Extract)



(萃) 金妍鐵觀音
Rose Chamomile
Tieguanyin (Extract)



(萃) 洋甘菊金萱烏龍
Chamomile Jinxuan
Oolong Tea (Extract)



(萃) 桂花烏龍清茶
Osmanthus Oolong
Tea (Extract)



(萃) 經典英式伯爵茶
Classic Earl Grey
Black Tea (Extract)



(萃) 夢幻水果茶
Fantasy Berries Tea
(Extract)



(萃) 荔枝紅茶
Lychee Black Tea
(Extract)



(萃) 日式烤茶
Japanese Hoji Tea
(Extract)



(萃) 大馬士革纖綠茶
Rose Green Tea
(Extract)



(萃) 太妃紅茶
Toffee Black Tea
(Extract)



(萃) 玄米玉露
Genmai Tea
(Extract)

產品規格 | Product Specifications

散茶包裝 | Loose Tea Leaves Packaging 600 g x 24 bags / CTN 1.2 kg x 15 bags / CTN

萃取茶包裝 | Extract Tea Bag Packaging 8 g x 50 bags x 20 packs / CTN

外箱尺寸 | Carton Dimensions

散茶 (Loose Tea Leaves) : 51 x 43 x 44.5 cm
萃取茶包 (Extract Tea Bags) : 35 x 32.5 x 27 cm

客製化服務 | Customization

接受客製商標與外箱私版製作。
OEM / ODM orders and private labeling acceptable.



濃糖果漿系列

Juice Syrup Series



芒果
Mango



草莓
Strawberry



百香果
Passion Fruit



荔枝
Lychee



藍莓
Blueberry



柳橙
Orange



鳳梨
Pineapple



奇異果
Kiwi Fruit





水蜜桃
Peach



葡萄
Grape



葡萄柚
Grapefruit



綜合果汁
Assorted Fruit



鮮桔
Kumquat



檸檬
Lemon



青蘋果
Green Apple



紅芭樂
Red Guava



蔓越莓
Cranberry



覆盆莓
Raspberry



綠哈密瓜
Green Honeydew



櫻桃
Cherry



紅石榴
Grenadine



藍桔
Blue Curacao



乳酸
Yogurt



楊桃
Carambola



冬瓜
Wax Melon



龍眼蜂蜜
Honey



杏仁
Almond



芋頭
Taro



椰子
Coconut



日式抹茶
Matcha



火龍果
Dragon Fruit



蜜凍芒 (冷凍)
Honey Mango Syrup (Frozen)

產品規格 | Product Specifications

產品包裝 | Packaging

1.2 kg x 12 btl / 2.5 kg x 6 btl / 5 kg x 4 btl / 20 kg

外箱尺寸 | Carton Dimensions (2.5 kg)

31.5 x 27 x 26 cm

最低訂購量 | MOQ

常規口味 (Regular Flavor) : 1 箱 (1 carton)
客製口味 (Custom Flavor) : 50 箱 (50 cartons)

客製化服務 | Customization

接受客製商標與外箱私版製作。
OEM/ODM available (including custom flavors, colors, and private labeling).



其他口味 | Other Flavors

黃蘋果 Yellow Apple

黃哈密瓜 Yellow Honeydew

加味楊桃 Special Carambola

金桔檸檬 Kumquat Lemon

青葡萄 Green Grape

桑葚 Mulberry

香蕉 Banana

木瓜 Papaya

西瓜 Watermelon

榴槤 Durian

薄荷 Peppermint

白桃 White Peach

白芭樂 White Guava

雪梨 Pear

古早味糖水 Special Caramel

泡泡糖 Bubble Gum

烏梅 Dark Plum

紅梅 Red Plum

洛神梅 Hibiscus Plum

薑母汁 Ginger

桂圓肉汁 Longan

特調酸梅 Special Plum

紫薯 Purple Sweet Potato

果糖 Fructose



花釀系列 Flower Petal Syrup



桂花釀
Osmanthus Petal Syrup

玫瑰花釀
Rose Petal Syrup

洛神花釀
Hibiscus Petal Syrup

果醬系列 Fruit Jam



草莓果醬
Strawberry Jam



芒果果醬
Mango Jam



百香果醬
Passion Fruit Jam



鳳梨果醬
Pineapple Jam



藍莓果醬
Blueberry Jam



奇異果醬
Kiwi Fruit Jam



金桔果醬
Kumquat Jam



水蜜桃果醬
Peach Jam



情人果醬
Green Mango Jam



紅梅果醬
Red Plum Jam



桑椹果醬
Mulberry Jam



烏梅果醬
Dark Plum Jam

風味糖漿系列

Flavored Syrup Series



黑糖蜜
Brown Sugar Syrup



黑糖蜜
Brown Sugar Syrup



焦糖瑪奇朵糖漿
Caramel Syrup



法式香草糖漿
France Vanilla Syrup



榛果糖漿
Hazelnut Syrup



椰果系列

Nata De Coco Jelly Series

椰果 / 晶球 / 蒟蒻 / 其它系列
Coconut Jelly / Agar Jelly Ball / Topping Jelly / Others



芒果星鑽
Mango Star Jelly



草莓心鑽
Strawberry Heart Jelly



荔枝椰果
Lychee Coconut Jelly



鳳梨椰果
Pineapple Coconut Jelly



草莓椰果
Strawberry Coconut Jelly



芒果椰果
Mango Coconut Jelly



青蘋果椰果
Green Apple Coconut Jelly



葡萄椰果
Grape Coconut Jelly



彩虹寒天
Colorful Coconut Jelly



咖啡水晶
Coffee Jelly



晶球系列

Agar Jelly Ball (Crystal Boba)



晶球 2kg 袋裝
Jelly Ball 2kg Bag

特色介紹：免煮即食的半透明晶球，具備獨特的 Q 彈脆感與純淨外觀。完美適配奶茶、水果茶及冰品，是提升飲品層次的便利首選。 Ready-to-use translucent boba with a unique chewy texture. Perfect for milk tea, fruit tea, and desserts, offering a convenient way to elevate your drinks.



原味晶球
Original Flavor Jelly Ball



芒果晶球
Mango Flavor Jelly Ball



黑糖晶球
Brown Sugar Flavor Jelly Ball



彩虹晶球
Colorful Jelly Ball



櫻花晶球
Cherry Blossoms Jelly Ball



草莓晶球
Strawberry Jelly Ball



葡萄晶球
Grape Flavor Jelly Ball



荔枝晶球
Lychee Flavor Jelly Ball



抹茶晶球
Matcha Flavor Jelly Ball



芋頭晶球
Taro Flavor Jelly Ball



水蜜桃晶球
Peach Flavor Jelly Ball



西米晶球 - 原味
Small Jelly Ball-Original Flavor

袋裝果凍與粉粿

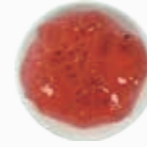
Jelly & Jelly Cake (In Bag)

特色介紹：袋裝設計拆封即用，不需烹煮即可享受絲滑果凍或道地粉粿。適合加入水果茶、冰沙，或直接作為甜品配料，省時又便利。 Convenient, ready-to-serve jelly and jelly cake with no cooking required. Ideal for fruit teas, smoothies, or as a standalone dessert topping.

▶ 青葡萄檸檬氣泡飲 + 青葡萄凍
Green Grape Lemon Sparkling Drink with Green Grape Jelly



▶ 袋裝果凍 2kg Jelly Bag



玫瑰凍
Rose Jelly



青葡萄凍
Green Grape Jelly



桂花凍
Osmanthus Jelly



鳳梨凍
Pineapple Jelly



蘋果凍
Apple Jelly

▶ 袋裝粉粿 2kg Jelly Cake



伯爵紅茶粉粿
Earl Grey Black Tea Flavor Jelly Cake



紫薯粉粿
Purple Sweet Potato Jelly Cake



黑糖粉粿
Brown Sugar Flavor Jelly Cake



蜂蜜檸檬粉粿
Honey Lemon Jelly Cake

果凍爆爆珠

Jelly Popping Boba

特色介紹：全新升級配料！不同於傳統果汁爆爆珠，咬下後是驚喜的果凍滑順口感。為您的茶飲與甜點帶來創新的味覺層次與視覺樂趣。 A premium upgrade! Unlike traditional juice-filled boba, it offers a surprisingly smooth jelly texture, bringing innovation and visual delight to your treats.

▶ 黑糖粉粿奶茶
Milk Tea with Brown Sugar Jelly Cake



產品規格 | Specifications

3.2 kg x 4 btl / Ctn (MOQ: 63 Ctns)

60 g x 90 cups / Ctn (MOQ: 72 Ctns)

Other sizes : 1.1 kg / 450 g / 120 g / 50 g



果凍爆爆珠 - 柳橙
Jelly Popping Boba- Orange Flavor



果凍爆爆珠 - 桃子粿
Jelly Popping Boba- Peach Flavor



果凍爆爆珠 - 葡萄
Jelly Popping Boba- Grape Flavor



果凍爆爆珠 - 檸檬
Jelly Popping Boba- Lemon Flavor

調味粉系列

Drink Powder Series



芋頭牛奶粉
Taro Milk Powder



椰子牛奶粉
Coconut Milk Powder



草莓牛奶粉
Strawberry Milk Powder



芒果牛奶粉
Mango Milk Powder



哈密瓜牛奶粉
Honeydew Milk Powder



泰式奶茶粉
Thai Milk Tea Powder



日式綠茶粉
Matcha Powder



巧克力牛奶粉
Chocolate Milk Powder





奶蓋粉 (原味 / 海鹽 / 起司)
Cream Topping Powder
(Original / Sea Salt / Cheese)



奶精粉
Non-Dairy Creamer



原味雪花冰粉
Snow Ice Powder



牛奶雪花冰粉
Milk Snow Ice Powder



雞蛋布丁粉
Egg Pudding Powder



仙草凍粉
Grass Jelly Powder



奶酪粉
Panna Cotta Powder



烤布蕾粉
Creme Brulee Powder



三合一奶茶粉
3 in 1 Milk Tea Powder



紫薯掛杯粉
Purple Sweet Potato
Walling Powder



抹茶掛杯粉
Matcha Walling Powder



港式雞蛋仔粉
Egg Waffle Powder

純粉系列 | Pure Powder Series

抹茶粉 Matcha Powder

咖啡粉 Coffee Powder

花生粉 Peanut Powder

焙茶粉 Hojicha Powder

可可粉 Cocoa Powder

黑糖粉 Brown Sugar Powder

芝麻粉 Sesame Powder

調味牛奶粉系列 | Flavored Milk Powder Series

杏仁牛奶粉 Almond Milk Powder

香蕉牛奶粉 Banana Milk Powder

木瓜牛奶粉 Papaya Milk Tea

香草牛奶粉 Vanilla Milk Powder

西瓜牛奶粉 Watermelon Milk Powder

布丁牛奶粉 Milk Pudding Powder

其他飲料粉系列 | Other Drink Powder Series

拿鐵咖啡粉 Latte Coffee Powder

沖繩黑糖奶茶粉 Okinawa Brown Sugar Milk Tea Powder

紫薯拿鐵粉 Purple Sweet Potato Latte Powder

漸層飲料粉 Gradient Beverage Powder

摩卡咖啡粉 Mocha Coffee Powder

北海道札幌奶茶粉 Hokkaido Milk Tea Powder

地瓜拿鐵粉 Sweet Potato Latte Powder

芋圓 / 薯圓粉 Taro Ball / Sweet Potato Ball Powder

產品規格 | Product Specifications

產品包裝 | Packaging

外箱尺寸 | Carton Dimensions (2.5 kg)

客製化服務 | Customization

1 kg x 20 bags / CTN

54.1 x 33.5 x 20 cm

接受風味、顏色調整及商標外箱私版製作。
OEM/ODM available: customized flavors,
colors, and private labeling.





蜜漬罐頭系列 Canned Toppings Series



芋頭
Boiled Sweet Diced
Taro



紅豆
Boiled Sweet Red
Bean



綠豆
Boiled Sweet Mung
Bean



花生仁
Boiled Sweet
Peanut



花豆
Boiled Sweet
Kidney Bean



八寶豆
Boiled Sweet
Mix Bean



薏仁
Boiled Sweet Pearl
Barley



蘆薈
Aloe Vera



燒仙草汁
Grass Jelly
Concentrated Juice

雪花冰 Snow Ice



什麼是雪花冰？ What is Snow Ice?

雪花冰如絲綢般綿密輕盈，入口即化，是融合豐富果香與視覺藝術的極致甜點體驗。
Snow Ice features delicate, ribbon-like layers that melt instantly, offering a velvety and artistic dessert experience.



包裝材料 Utensil



▲ 不鏽鋼茶網 (附把)
Stainless Steel Tea Net (include grip)



▲ 不鏽鋼珍珠漏盆
Stainless Steel Filter Basin



▲ 茶桶
Tea Bucket



▲ 茶桶 (溫度計款)
Tea Bucket (with thermometer)



▲ 不鏽鋼雪克杯 350cc/530cc/700cc
和不鏽鋼 OZ 杯
Stainless Steel Shaker
350cc/530cc/700cc and
Stainless Steel OZ Cup



▲ 雪克杯 350cc/530cc/700cc
和塑膠 OZ 杯
PC Shaker 350cc/530cc/700cc
and PC OZ Cup



▲ 珍珠杓 (網)
Tapioca Scoop



▲ 吧台匙
Stainless Steel Bar Spoon



▲ 奶精匙
Rubber Measuring Spoon



▲ 吸管
Straws



▲ 封膜
Sealing Film



▲ 紙吸管
Paper Straws



▲ 1.2 公斤罐
1.2 kg Bottle



▲ 2.5 公斤 果汁桶
2.5 kg Bottle



▲ 5 公斤 果汁桶
5 kg Bottle



▲ 壓嘴
Pump



▲ 塑膠杯 Plastic Cup



▲ 圓底 Q 杯 Round Shap Q Cup



▲ 水晶杯 Crystal Cup



▲ 紙杯 Paper Cup

機器設備 Equipment

刨冰機 Snow Ice Shaving Machine



刨冰機
Shaving Machine S208D



抗菌型刨冰機
Shaving Machine PDOM-GRM



雪人雪花刨冰機
Shaving Machine JB-208

雪花冰機 Snow Ice Maker Machine



Item: Snow Ice Maker
Machine (SM-600-16)
Size: 100x86x100cm
C E Certification



Item: Snow Ice Maker
Machine (SM-600-24)
Size: 135x86x100cm
C E Certification



雪花冰桶
Snow Ice Block
Container



16 孔雪花冰機 - 成冰過程
Snow Ice Block Forming
Process



雪花製冰機
Snowflake Ice
Machine Model X

桌上型自動杯蓋封口機
Sealing Machine



ET-95SN



YF-98S

水冷式製冰機
Ice Making Machine



LD-220

智能煮粉圓機
Smart Boba Cooker



F-915

攪拌機
Blender



Mp3



EJ817

熱開水機
Hot Water Dispenser



GE-410HL

果糖定量機
Fructose Dispenser



EZ-850



ET-9EN

粉類定量機
Powder Quantity Machine



PD260

搖搖機
Shaking Machine



SK-300

智能商用泡茶機
Intelligent Tea
Brewing Machine



TB-35T

熱水蒸氣兩用機



GE-221N

港式雞蛋仔機
Egg Waffle Machine



HY-869

衛生冰塊刨冰機
Ice Cube Shaver
Machine



SIS-11

從台灣出發，將創新飲品原料帶向世界。

與全球夥伴攜手，創造每一杯的無限可能。

From Taiwan to the world, bringing innovative beverage ingredients to every market.
Creating endless possibilities in every cup with partners worldwide.



請用手機掃描來獲得更多的訊息
You can scan the QR Code containing
URLs and contact info.